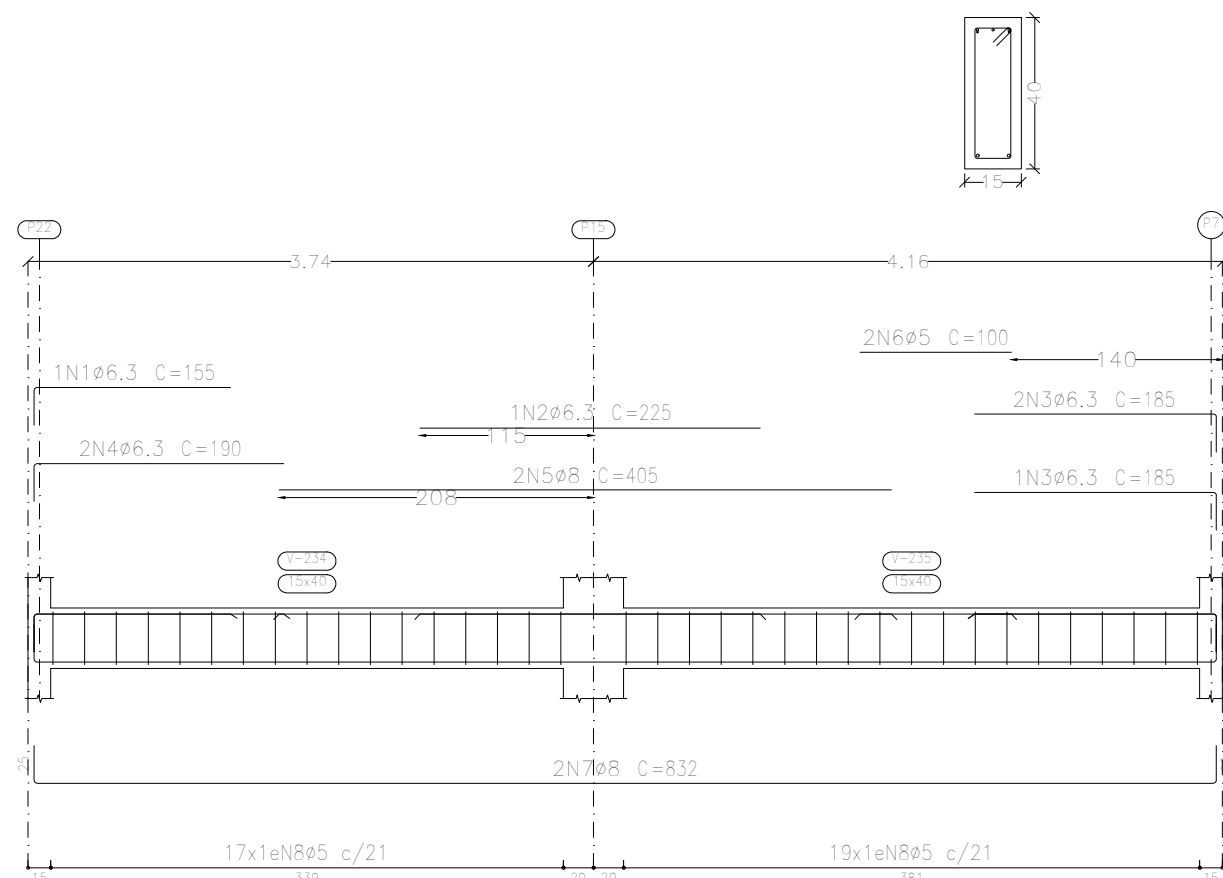
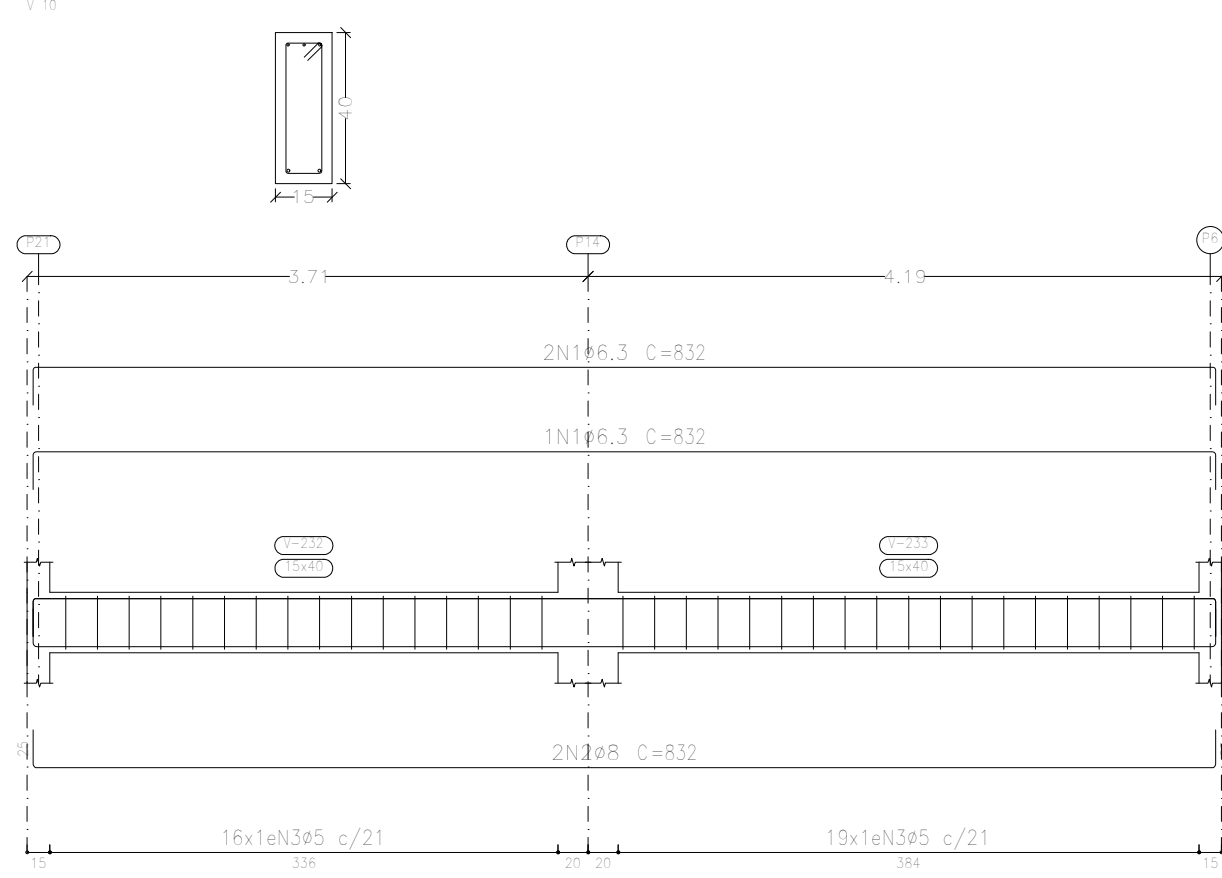


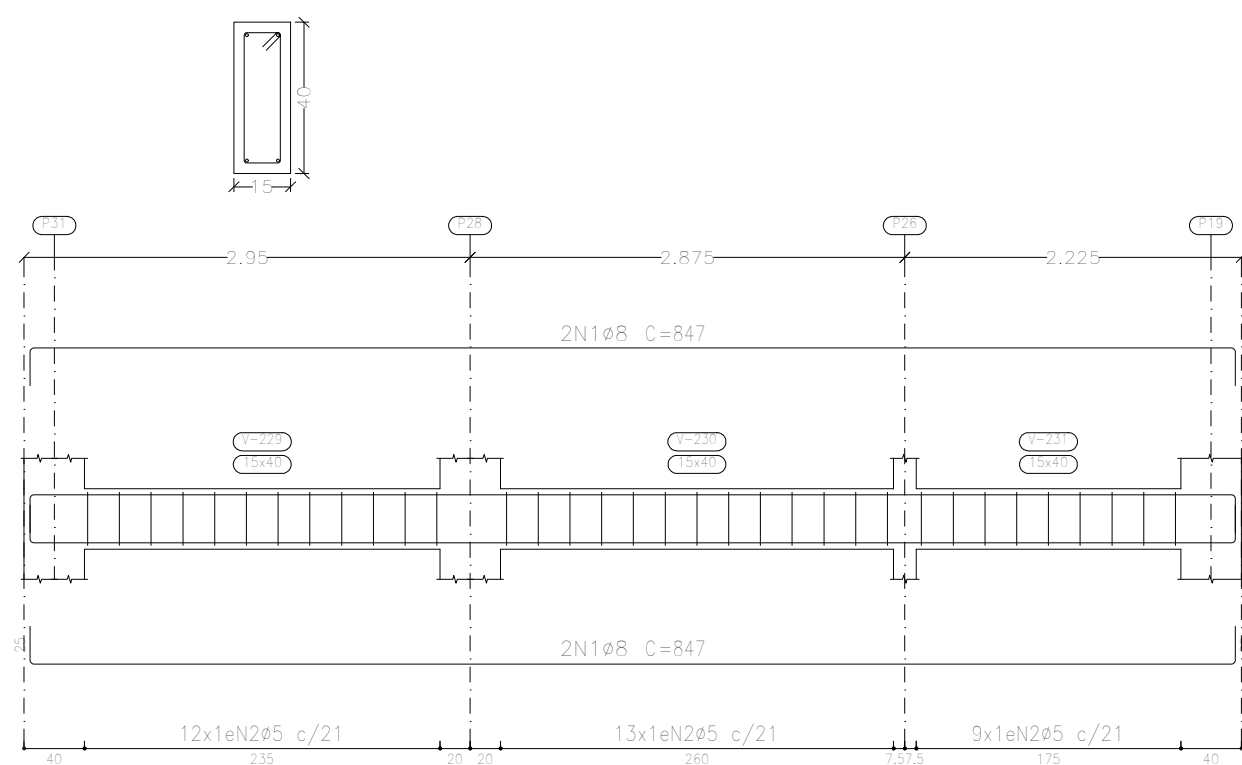
V 11



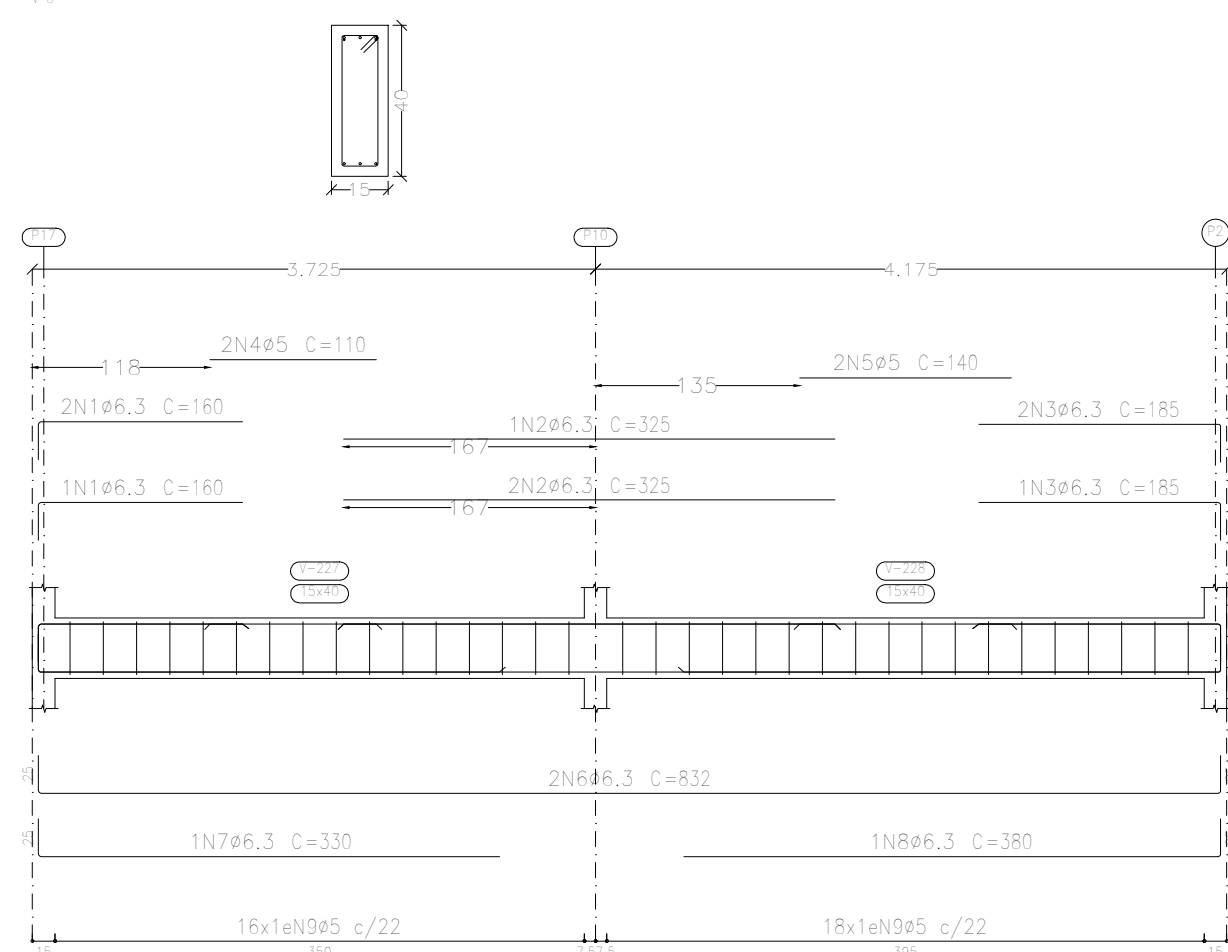
V 10



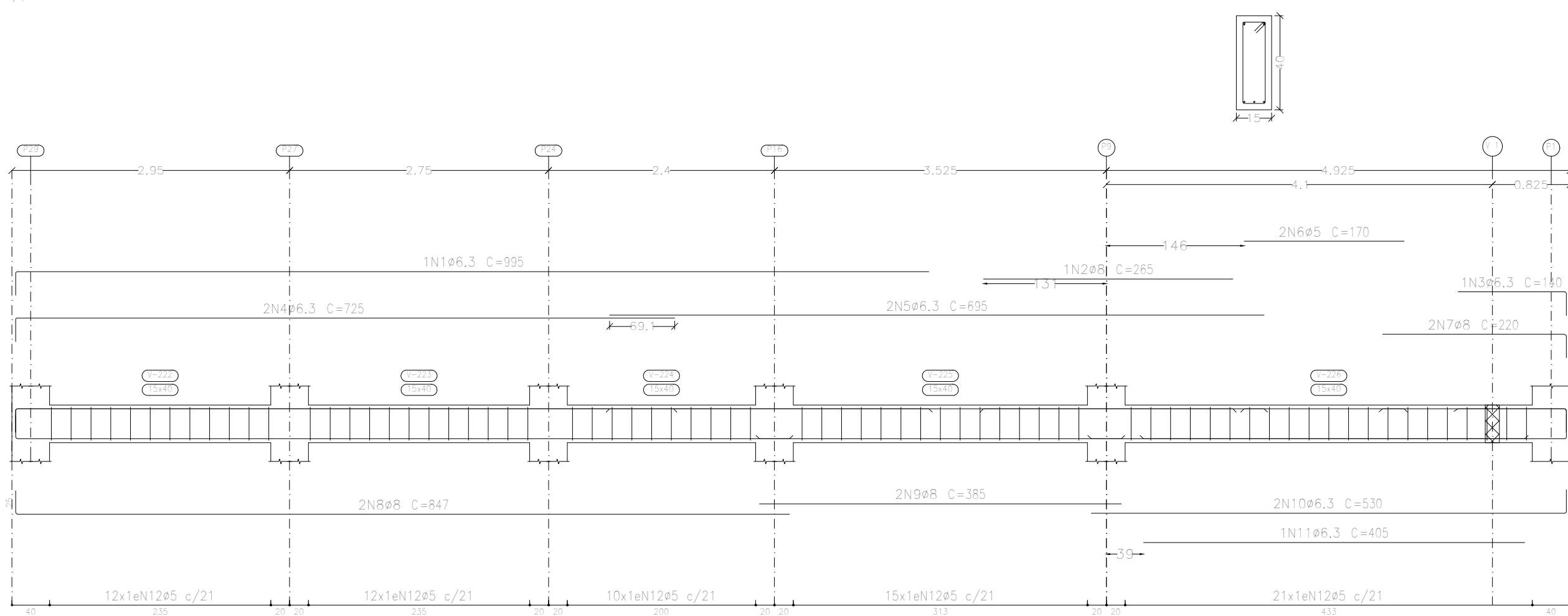
V 9



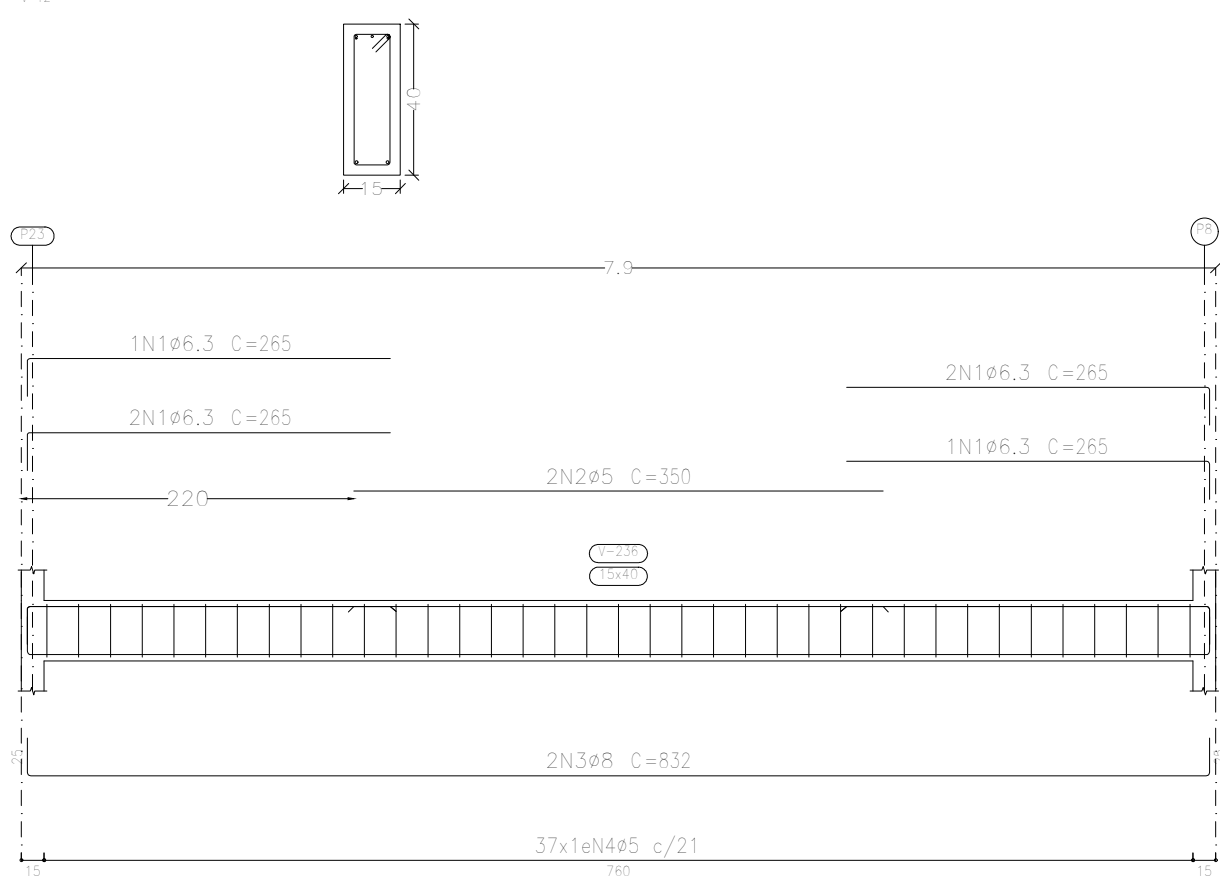
V 8



V 7



V 12



Resumo Aço	Comp. total	Peso+10%	Total
Desenho de vigas	(m)	(kg)	
CA-50 ø6,3	428.2	115	
ø8	229.3	100	217
ø10	3.2	2	
CA-60 ø5	583.3	101	101
Total			318

Elemento	Pos.	Diã.	Q.	Esquema (cm)	Comp. (cm)	Total (cm)	CA-50 (kg)	CA-60 (kg)
V 11	1	ø6,3	1		155	155	0.4	
	2	ø6,3	1		225	225	0.6	
	3	ø6,3	3		185	555	1.4	
	4	ø6,3	2		190	380	0.9	
	5	ø8	2		405	810	3.2	
	6	ø5	2		100	200		0.3
	7	ø8	2		832	1664	6.6	
	8	ø5	36		98	3528		5.5
Total+10%							14.4	6.4
V 12	1	ø6,3	6		265	1590	3.9	
	2	ø5	2		350	700		1.1
	3	ø8	2		832	1664	6.6	
	4	ø5	37		98	3626		5.7
Total+10%							11.6	7.5
V 10	1	ø6,3	3		832	2496	6.1	
	2	ø8	2		832	1664	6.6	
	3	ø5	35		98	3430		5.4
Total+10%							14.0	5.9
V 9	1	ø8	4		847	3388	13.4	
	2	ø5	34		98	3332		5.2
Total+10%							14.7	5.7
V 8	1	ø6,3	3		160	480	1.2	
	2	ø6,3	3		325	975	2.4	
	3	ø6,3	3		185	555	1.4	
	4	ø5	2		110	220		0.3
	5	ø5	2		140	280		0.4
	6	ø6,3	2		832	1664	4.1	
	7	ø6,3	1		330	330	0.8	
	8	ø6,3	1		380	380	0.9	
	9	ø5	34		98	3332		5.2
Total+10%							11.9	6.5
V 7	1	ø6,3	1		995	995	2.4	
	2	ø8	1		265	265	1.0	
	3	ø6,3	1		140	140	0.3	
	4	ø6,3	2		725	1450	3.6	
	5	ø6,3	2		695	1390	3.4	
	6	ø5	2		170	340		0.5
	7	ø8	2		220	440	1.7	
	8	ø8	2		847	1694	6.7	
	9	ø8	2		385	770	3.0	
	10	ø6,3	2		530	1060	2.6	
	11	ø6,3	1		405	405	1.0	
	12	ø5	70		98	6860		10.8
Total+10%							26.3	12.4
							ø5:	0.0
							ø6,3:	41.1
							ø8:	53.8
							Total:	94.9
								44.4

Piso 2  
Desenho de vigas  
Concreto: C25, em geral  
Aço das barras: CA-50 e CA-60  
Aço dos estribos: CA-50 e CA-60  
Escala vigas 1:50  
Escala seções 1:20  
Escala aberturas 1:20

Complexo Municipal de Saúde	Data: 25/10/2023
Local: Avenida Júlia Campos, Quadra 03	Número de desenho:
Promotor:	
Complexo Municipal de Saúde	Escala: Indicada
Engenheiro Civil: Número do CREA: 1220503037	Data: 25/10/2023